

221 Northcreek Cir, Walnut Creek

2 Bedrooms | 2 Baths | 1500 Sq Ft. | Listed for \$825,000



Perfectly Located Townhome with Primary Suite on Main Level

Gorgeous and unique townhome in a terrific location includes 2 bedrooms + a loft area, perfect for a home office, and 2 full baths. This floor plan features a primary suite conveniently located on the main level, and this particular townhouse is only connected to one other home at the garage wall.

Upon entering, you'll encounter a spacious and bright living area with vaulted ceilings, hardwood flooring, gas fireplace with insert and formal dining area. The island kitchen has been improved with modern lighting, stainless steel appliances and granite counters. This is one of the few properties in this complex that has an expanded patio & yard area, and the owner has beautifully landscaped it with a flagstone patio and garden.

Upstairs is a sizable 2nd bedroom with vaulted ceiling, a full bath which has been renovated with newer shower, vanity, flooring and modern fixtures and finishes, a loft area and convenient walk-in attic for abundant storage options. Additional features include a two car attached garage, Milgard dual pane windows and sliding glass doors downstairs and plantation style shutters in some areas.

Outstanding location, just next to the Canal trail and Heather Farms Park, with a private entrance from the community, and a short distance to the Countrywood Shopping Center, BART and freeway access.

The Rancho Dorado HOA includes a community pool, tennis courts and greenbelt area. Dues are \$475 monthly.

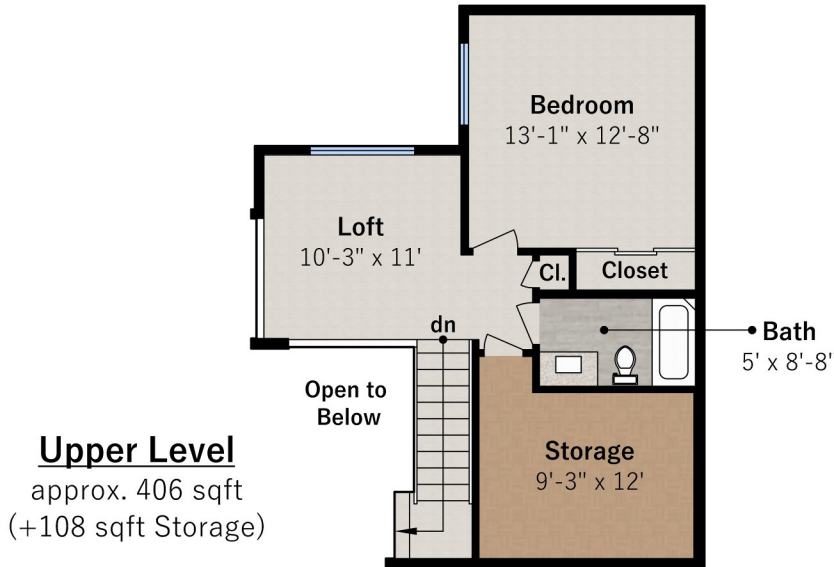


Ken Jacobs
Broker/Owner
925.280.1260
ken@ClocktowerRealty.com
DRE # 01242343



221 Northcreek Circle

Walnut Creek, CA 94598



Upper Level
approx. 406 sqft
(+108 sqft Storage)

Estimated Total Finished
Square Footage: 1,513 sqft
Main Level: 1,107 sqft
Upper Level: 406 sqft

Estimated Total Unfinished
Square Footage: 548 sqft
Garage: 440 sqft
Upper Level Storage: 108 sqft

Interior room dimensions are shown,
but all square footage is calculated
from the outside perimeter of exterior
walls. Balconies, porches, and patios
are not included in calculations.
Measured on January 20th, 2023



Main Level
approx. 1,107 sqft
(+440 sqft Garage)

Any and all information on this drawing is
for illustrative purposes only and is deemed
reliable, but not guaranteed. All information
requires independent verification.

Listed By: Ken Jacobs
Clocktower Realty | www.cloctowerrealty.com





- 2 bedrooms, 2 baths, approximately 1500sq ft (according to public records)
- Living area with hardwood flooring, vaulted ceilings, custom gas fireplace and dining area
- Kitchen includes convenient island, granite counters and stainless steel appliances.
- Primary suite on main level has new carpeting, double sinks and two closets
- Gorgeous landscaped rear patio
- Two car attached garage
- Included refrigerator & washer/dryer
- Convenient to BART and freeway access, canal trail, Heather Farms Park and Countrywood Shopping Center.
- HOA features include a community pool, tennis courts and greenbelt area.
- Highly rated Walnut Creek schools include Bancroft Elementary, Foothill Middle School and Northgate High School (please verify availability w/school district)
- HOA Dues \$475 monthly

Offered at \$825,000



www.221NorthcreekCir.com

All Material presented here in is intended for informational purpose only. Information is compiled from sources deemed reliable but has not been verified. No Statement is made as to the accuracy of any description. All measurements and square footages are approximate. Exact dimensions can be obtained by retaining the services of an architect or engineer.